



# LUXEMBOURG - INLAND WATERS

## COMPILATION OF THE MOST IMPORTANT FISHING REGULATIONS

Translated by Claude Strotz for [www.flyfishing.lu](http://www.flyfishing.lu) and F.L.P.S.

The inland waters are divided into two categories:

### 1 Category: Navigable and raftable waters

Public waters where the fishing rights belong to the state  
this means:

The drinkable water reservoir above the village of Esch-Sauer.

The Sauer-river from the old bridge in Ettelbrück (210 meters upstream from the confluence with the Alzette) to the confluence with the Our-river at Wallendorf.

### 2 Category: Non-navigable and non-raftable rivers

Private waters and rivers which are leased. With only a few exceptions these rivers are closed for public fishing.



## Fishing Permits

Anyone over 14 years old who wishes to fish in Luxembourg's inland waters must carry a fishing permit issued in their name. Youths under 14 are allowed to fish without a permit with one fishing rod in category 1. Fishing in category 2 is only allowed with a written permission of the leaseholder.

### There are three categories of fishing permits:

The basic fishing permit (called 0 / Zero ) allows its holder to fish in category 2 waters if they have fishing rights or permission from the leaseholder.

The "A" fishing permit grants, in addition to the basic rights, the ability to fish from the shore in category 1 waters.

The "B" fishing permit grants, in addition to the previous rights, the ability to fish from a boat in category 1 waters or use a floating or stationary device.

The inland fishing permit can be applied for online via MyGuichet.lu with or without authentication. Upon payment, the holder will receive their permit in PDF format.



[Buy your inland permits online](http://www.flyfishing.lu)

Additionally, the fishing permit is issued at the following offices of the Registration, Estates, and VAT Administration in Luxembourg City, Grevenmacher, Diekirch and Esch-Sur-Alzette

During an inspection, the holder must present the permit.

If fishing on private property, a document issued by the leaseholder granting permission to fish on their property must also be shown.

## Where Can I Fish, and Which Permit Do I Need?

Publicly accessible waters include:

### The Esch-Sauer Water Reservoir

### The middle Sauer-river from Ettelbrück to Wallendorf

(starting at the confluence of the Sauer and Alzette, ending at the confluence of the Our-river with the Sauer).

To fish here, inland waters permit A or B is required.

All other rivers in the country are leased privately and may only be fished with permission from the leaseholder and a special permit.

At the Heiderscheidergrund campsite, tourists can obtain a rare fishing permit for one of these sections.



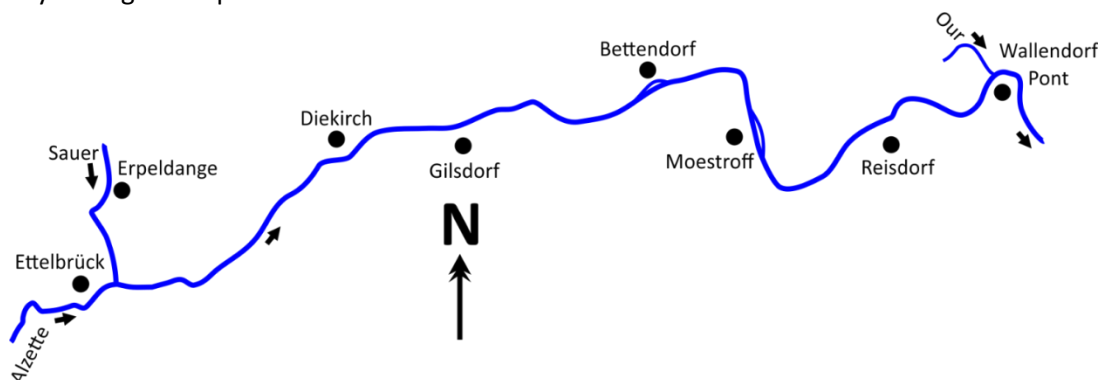
The lakes of Echternach and Remerschen are neither border nor inland waters and are managed privately. Fishing here requires a special day, weekly, or annual permit, independent of the state permits. Specific, sometimes varying, regulations apply, which must be confirmed on-site.

## Fishing in the Middle Sauer

Maximum one rod, which must remain under the constant supervision of the angler.

Fishing line with one hook. (One treble hook counts as one hook).

Fly fishing with up to three flies on the leader.



Allowed catches per day:

maximum 3 salmonids (trout, char, grayling) and 1 pike or 1 zander.

## PROHIBITED:

Fishing at night; "night" is defined as:

- From October 1 to March 31: between 7:00 PM and 7:00 AM.
- From April 1 to September 30: between 11:00 PM and 5:00 AM.

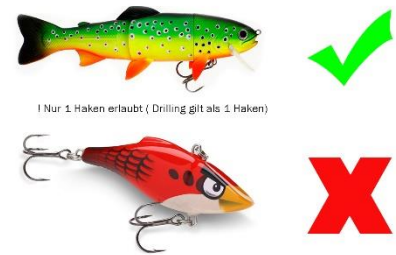
Using crayfish, frogs, natural or artificial fish eggs, and dyed maggots as bait (Pinkies, etc.).

Baiting with natural or artificial maggots.

Manufacturing, preparing, or using baits and attractants (feed) with substances prohibited under food laws.

Removing undersized or protected fish species.

Removing fish during their closed season.



## Don't:

Install barriers, devices, or any fishing equipment in watercourses that obstruct the free passage of fish.

Create artificial fishing spots in category 1 waters.

Force fish into traps or any devices that limit their ability to escape.

Stir or disturb the water, for example by agitating the silt or shaking shelters to drive fish into nets.

Fish with lights, fires, or electrical devices, or by breaking ice or concentrating fish in one spot with any means.

Attack fish with sharp or blunt tools.

Use firearms, ropes, or snares.

Throw explosives, bait, drugs, or any substances into the water that may kill or stun fish, crayfish, or frogs.

Attach traps, baskets, or nets to dams, sluice gates, fish ladders, mill weirs, or other waterworks.

Use trawls or dragging nets not specifically designed for this purpose.

Fish by hand.

From the second day after the fishing season closes, it is forbidden to transport, sell, or offer for sale fish, crayfish, or frogs whose capture is prohibited unless proof can be shown that they came from waters to which this law does not apply. This also applies to fish and crayfish that do not meet size regulations.

Fishing is prohibited in unleased fishing sections due to a decision by the syndicate not to lease them.

## Fishing in the Esch-Sauer Reservoir

Fishing is only permitted in protection zone 2.

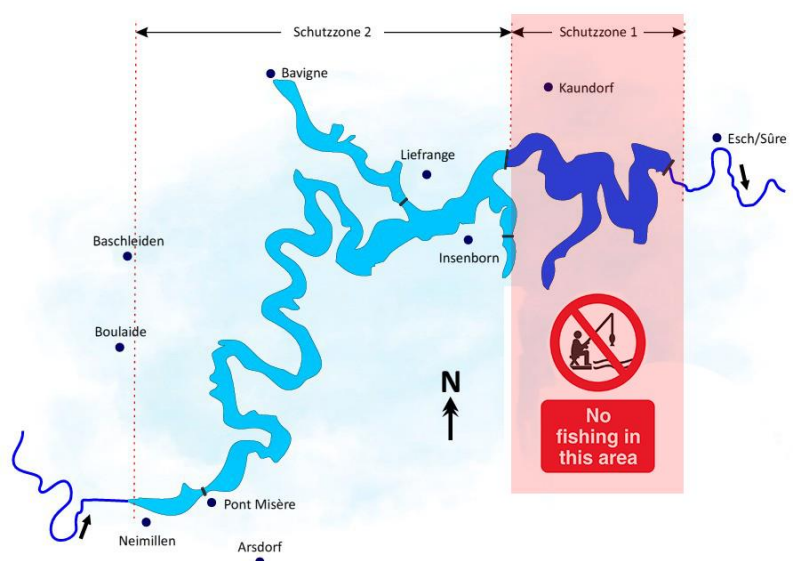
Maximum two rods, which must remain under the constant supervision of the angler.

Fishing line with one hook. (One treble hook counts as one hook).

Fly fishing with up to three flies on the leader.

Allowed catches per day:

Maximum 6 salmonids (lake trout, Arctic char) and 2 pike or zander, or 1 pike and 1 zander.





## Other Inland Waters - Category II

### (Non-public / Leased Waters)

Fishing permit –A- (shore) **with the leaseholder's permission.**

or –B- (boat) **with the leaseholder's permission.**

or –O- **with the leaseholder's permission.**

One rod, which must remain under the constant supervision of the angler.

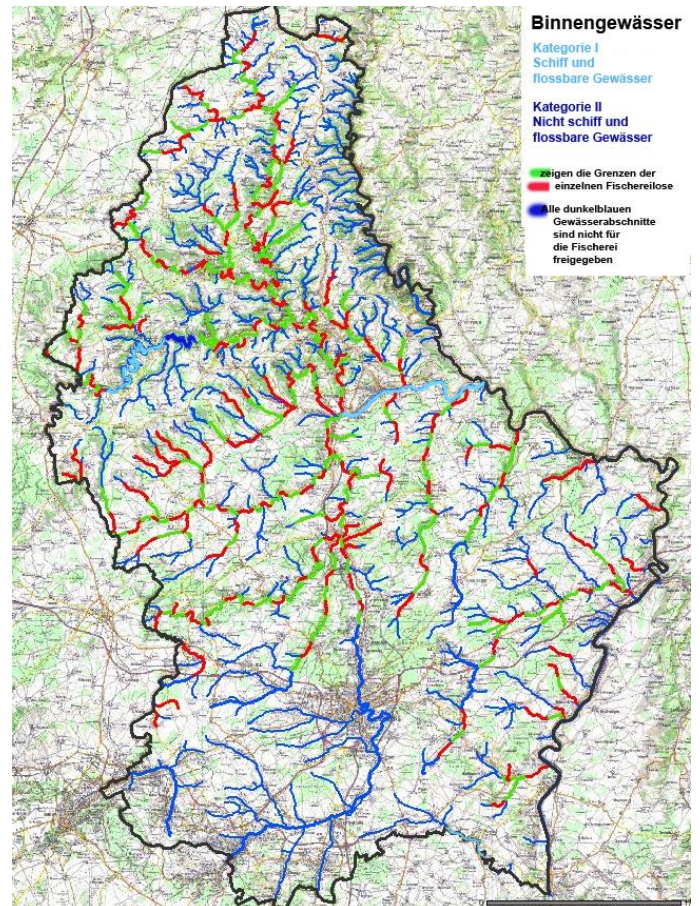
Fishing line with one hook. (One treble hook counts as one hook).

Fly fishing with up to three flies on the leader.

Baitfish may only be used if they meet the legal size requirements and their capture is allowed (observe closed seasons). Baitfish without size restrictions may be used freely.

Fishing is prohibited in unleased fishing sections.

In category 2, there are no catch limits; the leaseholder determines the rules.



## CLOSED SEASONS AND CATCH SIZES in Inland Waters

FISCHARTEN	Gewässer	M-maß	J	F	M	A	M	J	J	A	S	O	N	D
Seeforelle ( Salmo Trutta forma lacustris )	Stausee E/S	30 cm												
Bachforelle ( Salmo Trutta forma fario )	Stausee E/S	30 cm												
Regenbogenforelle	1+2 Kategorie	/												
Bachforelle ( Salmo Trutta forma fario )	1 Kategorie	25 cm												
Bachforelle ( Salmo Trutta forma fario )	2 Kategorie	20 cm												
Bachsaibling ( Salvelinus fontinalis )	1+2 Kategorie	/												
Seesaibling ( Salvelinus alpinus )	Stausee E/S	30 cm												
Äsche ( Thymallus thymallus )	1+2 Kategorie	30 cm												
Äsche ( Thymallus thymallus )	Attert	20 cm												
Aal ( Anguilla anguilla )	1+2 Kategorie	40 cm												
Hecht ( Esox lucius )	1+2 Kategorie	50 cm												
Zander ( Stizostedion lucioperca )	1+2 Kategorie	45 cm												
Karpfenfamilie, Carpe ( Cyprinus carpio L )	1+2 Kategorie	35 cm												
Gründling ( Gobio gobio )	1+2 Kategorie	/												
Giebel ( Carassius auratus gibelio )	1+2 Kategorie	/												
Barbe ( Barbus barbus )	1+2 Kategorie	35 cm												
Schleie ( Tinca tinca )	1+2 Kategorie	25 cm												
Nase ( Chondrostoma nasus )	1+2 Kategorie	30 cm												
Rotaugen ( Rutilus rutilus )	1+2 Kategorie	15 cm												
Rotfeder ( Scardinius erythrophthalmus )	1+2 Kategorie	15 cm												
Ukelei ( Alburnus alburnus )	1+2 Kategorie	/												
Hasel ( Leuciscus leuciscus )	1+2 Kategorie	/												
Signalkrebs, ( Pacifastacus leniusculus )	1+2 Kategorie	/												
Kamberkrebs ( Orconectes limosus )	1+2 Kategorie	/												
Galizischer Sumpfkrebs ( Astacus leptodactylus )	1+2 Kategorie	/												
Ganzjährig geschützte Arten / Espèces protégées *	1+2 Kategorie	/												
Alle nicht vorstehend benannten Arten	1+2 Kategorie	/												

\* Ganzjährig geschützte Arten / Espèces protégées: saumon, truite de mer, lotte, esturgeon, flet, grande alose, petite alose, lamproie de mer, lamproie fluviatile, petite lamproie, bouvière, loche franche, loche de étang, loche de rivière, chabot, vairon, spirin, carassin , écrevisses noble (Astacus astacus ) et écrevisse de torrent (Austropotamobius torrentium)